



avenli

furniture 2020





# Marketing & Sales



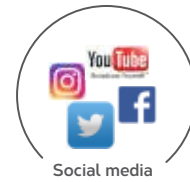
Advertisement



Sponsorship



Exhibition



Social media

We have over 22 years of experience in the inflatables industry to support our global partners.

We are constantly upgrading our packaging, sales promotion material, product manuals and other sales tools to service customers around the world, including big retail chains, internet sellers, distributors & independent shops.



# Table of Contents

## • INDOOR Airbeds

Rapid Air Tech Airbed ( P11-P17 )

Deluxe Airbed with headboard ( P18-P19 )

High Raised Airbed ( P20-P23 )

## • LOVELY KIDS Airbeds

Kids Airbeds ( P25-P27 )

## • OUTDOOR Airbeds

Camping Mattress ( P29-P33 )

## • MODERN Furniture

Lounge and Sofa ( P35-P41 )

## • Accessories

Pillow and Pump ( P42-P43 )







## INDOOR Airbeds

- avenli, a high level brand for indoor and outdoor furniture, always means the best choice for high-end, fashionable products.
- Different but sturdy construction means that we can always offer premium airbeds with soft surfaces but strong and comfortable night's rest.
- Moreover, easy inflation and deflation is another great advantage!
- Whenever you tend to treat guest or rest if tired, avenli is your best choice especially for indoor furniture!



# avenli



## RAPID AIR SYSTEM

Super fast pump inflation and deflation in seconds  
GS SAFETY authorized

Twin size: inflation in 1'30"  
Queen size: inflation in 2'40"

## SUPER COMFORTABLE

Stronger air pressure  
Compact design meets ergonomic needs

## EASY TO RE-PACK

Without pump, smaller packaging, easier storage.







More Stable Durable  
and Comfortable



44 cm




**Rapid Air™ TECH**

## High Raised Airbed w/Electric Pump

- Heavy duty & pre-tested vinyl
- Soft and comfortable with flocked surface
- Strong and sturdy l-beam construction
- Easy inflation & deflation with removable pump
- Modern houndstooth fabric design
- Easy to pack & store in a dry bag
- Color box with repair patch



Region	Type	Inflated Size	Built-in Pump	Packing	Case Pack	Item Number
	Twin	196cmx92cmx44cm (77"x36"x17")	220-240 Volt	Color box	0.045cbm/2pcs	27482EU
	Queen	205cmx152cmx44cm (81"x60"x17")	220-240 Volt	Color box	0.053cbm/2pcs	27481EU





More Stable Durable  
and Comfortable



47 cm



**Rapid Air™ TECH**

# High Raised Airbed w/Electric Pump


- Heavy duty vinyl
- Soft and comfortable with flocked surface
- Strong and sturdy Coil-beam construction
- Easy inflation & deflation with removable pump
- Easy to pack & store in a dry bag
- Color box with repair patch




Region	Type	Inflated Size	Coit Beam	Built-in Pump	Packing	Case Pack	Item Number
	Twin	196cmx97cmx47cm (77"x38"x18.5")	21	220-240 Volt	Color box	0.038cbm/2pcs	27489EU
	Queen	203cmx157cmx47cm (80"x62"x18.5")	42	220-240 Volt	Color box	0.050cbm/2pcs	27490EU









More Stable Durable  
and Comfortable



Patented Technology  
pump



Inflation  
time  
1'30"  
2'40"




47 cm

# Rapid Air™ TECH

## High Raised Airbed w/Electric Pump

- Heavy duty vinyl
- Soft and comfortable with flocked surface
- Strong and sturdy I-Beam construction
- Easy inflation & deflation with removable pump
- Easy to pack & store in a dry bag
- Color box with repair patch

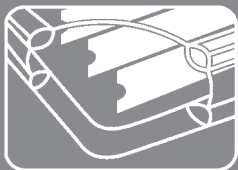


Region	Type	Inflated Size	Built-in Pump	Packing	Case Pack	Item Number
	Twin	195cmx94cmx38cm (77"x37"x15")	220-240 Volt	Color box	0.038cbm/2pcs	27491EU
	Queen	203cmx155cmx38cm (80"x61"x15")	220-240 Volt	Color box	0.050cbm/2pcs	27492EU

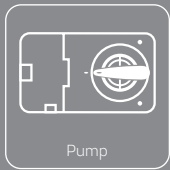




47 cm



More Stable Durable  
and Comfortable



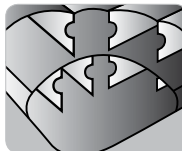
Pump

# DELUXE AIRBED WITH HEADBOARD

- Heavy duty vinyl
- Soft and comfortable with flocked surface
- Strong and sturdy I-Beam construction
- Easy inflation & deflation with built-in electric pump
- Easy to pack & store in a dry bag
- Color box with repair patch



Carry bag



I-Beam Structure



29P381EU  
220-240 VOLT

CE

Region	Type	Inflated Size	Built-in Pump	Packing	Case Pack	Item Number
	Queen	216cmx158cmx88cm (85"x62"x34.5")	220-240 Volt	Color box	0.061cbm/2pcs	27508EU






HIGH RAISED AIRBED

- Heavy duty & pre-tested vinyl
- Soft and comfortable with flocked surface
- Strong and sturdy I-beam construction
- Easy to pack & store in a dry bag
- Color box with repair patch



- Comfortable flocked surface
- Super safety valve
- Comfortable built-in pillow
- Folds easily for storage and travel

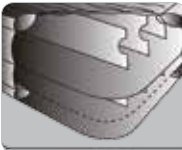
Region	Type	Inflated Size	Packing	Case Pack	Item Number
	Twin	195cmx94cmx38cm (77"x37.5"x15")	Color box	0.038cbm/2pcs	27494
	Queen	203cmx155cmx38cm (80"x61"x15")	Color box	0.050cbm/2pcs	27495

DELUXE HIGH-RAISED AIRBED

- Fantastic airbed allows you to tuck the sheets in easily
- I-Beam construction can match human beings shape perfectly with unbelievable comfort and stability
- 4-layer high raised platform (47cm/18.5") provides exceptional comfort of sleeping and makes it easy to get up from bed
- Soft and comfortable with flocked surface
- Quick and easy inflation and deflation with a built-in electric pump
- A bag included for a hassle free storage
- Repair Kits. Color box



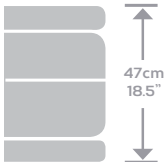
Carry bag



I-Beam Structure



29P381EU  
220-240 VOLT



Region	Type	Inflated Size	Built-in Pump	Packing	Case Pack	Item Number
	Queen	206cmx152cmx47cm (81"x60"x18.5")	220-240 Volt	Color box	0.044cbm/1pcs	27291EU





# HIGH-RAISED AIRBED

- A built-in pillow and a bulged surrounding frame add sleeping comfort and prevent user from rolling off the bed
- Strong vinyl coil beam construction
- 3-layer high raised platform (47cm/18.5") provides exceptional comfort of sleeping and makes it easy to get up from bed
- Soft and comfortable with flocked surface
- Quick and easy to inflate and deflate with a built-in electric pump
- A carry bag included for a hassle free storage
- Repair Patch. Color box



Region	Type	Inflated Size	Coil Beam	Built-in Pump	Packing	Case Pack	Item Number
	Twin	196cmx97cmx47cm (77"x38"x18.5")	21	220-240 Volt	Color box	0.045cbm/2pcs	27286EU
	Queen	203cmx157cmx47cm (80"x62"x18.5")	42	220-240 Volt	Color box	0.054cbm/2pcs	27266EU

# HIGH-RAISED AIRBED

- A built-in pillow and a bulged surrounding frame add sleeping comfort and prevent user from rolling off the bed
- Strong vinyl I-Beam construction
- 2-layer high raised platform (47cm/18.5") provides exceptional comfort of sleeping and makes it easy to get up from bed
- Soft and comfortable with flocked surface
- Quick and easy to inflate and deflate with a built-in electric pump
- A carry bag included for a hassle free storage
- Repair Patch. Color box



Region	Type	Inflated Size	Built-in Pump	Packing	Case Pack	Item Number
	Twin	196cmx97cmx47cm (77"x38"x18.5")	220-240 Volt	Color box	0.036cbm/2pcs	27236EU
	Queen	203cmx157cmx47cm (80"x62"x18.5")	220-240 Volt	Color box	0.061cbm/2pcs	27229EU





## LOVELY KIDS Airbeds

- Kids are more sensitive with the comfort of airbeds. avenli is devoted to develop the most appealing and more comfortable kiddie beds.
- That means whenever kids go, they can usually have a good rest and maintain great energy.



# avenli





## Racing Car Kids Bed

NEW DESIGN

- Strong and sturdy l-beam construction
- Soft and comfortable with flocked surface
- Modern racing car design
- Secure resting for babies
- Color box with repair patch

COLORS



type	Inflated Size	Coil Beam	Case Pack	Item Number
Kids	151cmx86cmx43cm (59.5"x33.5"x17")	Color box	0.043cbm/4pcs	27502

## Kids Flocked Airbed

- Strong and sturdy l-beam construction with built-in pillow
- Soft and cozy with flocked surface
- Color box with repair patch

COLORS



type	Inflated Size	Coil Beam	Case Pack	Item Number
Kids	157cmx66cmx23cm (62"x26"x9")	Color box	0.035cbm/6pcs	27501

## Kids Flocked Airbed

- Pool shape surrounding frame prevents your child from rolling off the bed
- Strong l-beam construction inflatable floor
- Soft and cozy with flocked surface
- Portable and light to carry
- Repair patch. Color box

COLORS



type	Inflated Size	Coil Beam	Case Pack	Item Number
Kids	152cmx89cmx17.5cm (60"x35"x7")	Color box	0.035cbm/6pcs	27311





## OUTDOOR Airbeds

- Outdoor airbeds from avenli is conducive to enjoy the adventure with the comfort rest all the time.
- Sturdy and pre-tested, strong coil beam construction but soft surface always avails you with great rest whenever you are on the adventurous course or just eager for good sleeping in your yard.



# avenli





# FLOCKED COIL BEAM AIRBED

- Strong vinyl coil beam construction
- Soft and comfortable with flocked surface
- Super safety valve helps rapid inflation and deflation
- Folds easily for storage and travel
- Convenient both for indoor and outdoor use
- Various size and color option available
- Repair patch, Color box



Type	Inflated Size	Coil Beam	Packing	Case Pack	Item Number
Single	191cmx73cmx22cm (75"x29"x9")	24	Color box	0.038cbm/6pcs	20411
Twin	191cmx99cmx22cm (75"x39"x9")	32	Color box	0.048cbm/6pcs	20334
Double	191cmx137cmx22cm (75"x54"x9")	40	Color box	0.039cbm/4pcs	20256
Queen	203cmx152cmx22cm (80"x60"x9")	48	Color box	0.052cbm/4pcs	20256-1
King	203cmx183cmx22cm (80"x72"x9")	56	Color box	0.029cbm/2pcs	20256-5

# FLOCKED COIL BEAM AIRBED

- Strong vinyl coil beam construction
- Soft and comfortable with flocked surface
- Super safety valve helps rapid inflation and deflation
- Folds easily for storage and travel
- Two pillows and a inflation handpump included
- Color box, Repair Patch



Type	Inflated Size	Pillow	Coil Beam	Packing	Case Pack	Item Number
Queen Set	203cmx152cmx22cm (80"x60"x9")	2	48	Color box	0.038cbm/2set	21470



Inflating Time



Coil Beam



Flocked



2 in 1 Valve





## 3 IN 1 FLOCKED AIRBED

- strong vinyl coil beam construction
- Soft and comfortable with flocked surface
- 3 in 1 functions as sinlge bed, double bed, and high raised single bed
- super safety valve helps rapid inflation and deflation
- Repair Patch, Color box

Type	Inflated Size	Pillow	Coil Beam	Packing	Case Pack	Item Number
Single x 2	191cmx73cmx22cm (75"x29"x9") x 2pc	2	24 x 2	Color box	0.045cbm/4set	27317

## Flocked Airbed with Built-in Foot Pump

- Heavy duty & pre-tested vinyl
- Strong and sturdy Coil-beam construction
- Easy inflation with built-in footpump
- Color box with repair patch



Person	Inflated Size	Coil Beam	Packing	Case Pack	Item Number
Single	191cmx75cmx22cm (75"x29.5"x9")	23	Color box	0.050cbm/6pcs	27503
Double	191cmx137cmx22cm (75"x54"x9")	39	Color box	0.048cbm/3pcs	27504



Inflating Time



Coil Beam



Flocked



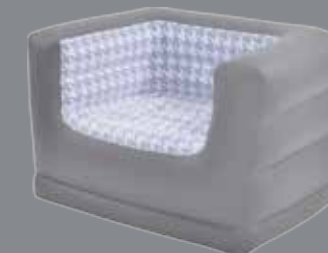
2 in 1 Valve





## MODERN Furniture

- avenli, a high level brand for indoor and outdoor furniture, always means the best choice for high-end, fashionable products.
- All modern and fashionable furnitures always contributes to offer a premium home design. No matter how tired you are or just want to have relax, Avenli is your best choice!



# avenli



# 5 in 1 Multi-Functional Sofa Bed

- # 27505 / 27506EU (with electric pump)
- ± 198cmx138cmx62cm (78"x54"x24")
- 14ga.( 0.35mm)vinyl,21.2ga.(0.53mm)flocked surface
- Heavy duty & pre-tested vinyl
- Multi-purpose use
- Soft and cozy with flocked surface
- Deluxe indoor design
- Color box with repair patch
- 0.054cbm/2pcs/ctn

## COLORS



Carry bag



29P308EU  
220-240 VOLT



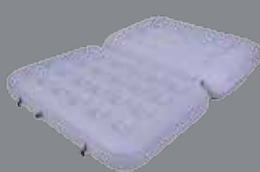
- Coil-beam construction provides excellent support for the body
- Flocked top provides soft velvety feel and adds comfort
- Convenient folding design for different functions
- Quick and easy inflation and deflation with an electric pump
- A carry bag included
- Repair patch. Color box



Double Sofa



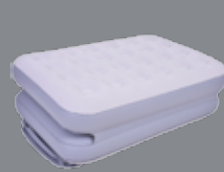
Double Lounge



1-Layer Double Bed



Double bed w/backrest



2-Layer Single bed

# Deluxe lounge w/stool

- # 27496 / 27497
- Lounge: ± 116cmx98cmx83cm (45.5"x38.5"x32.5")
- Stool: ± 55cmx55cmx29cm(21.5"x21.5"x11.5")
- 20ga.( 0.50mm)vinyl, 12ga.(0.30mm)flocked surface
- Heavy duty & pre-tested vinyl
- Soft and comfortable backrest and footrest
- Deluxe indoor design
- Color box with repair patch
- 0.048cbm/4set/ctn

## # 27496

## COLORS



## # 27497

## COLORS







# Modern Armchair

- Heavy duty & pre-tested vinyl
- Soft and cozy with flocked surface
- Color box with repair patch

COLORS



Inflated Size	Coil Beam	Case Pack	Item Number
138cmx87cmx71cm (54" x34" x28")	Color box	0.036cbm/3pcs	27507

# Deluxe Armchair

- Heavy duty & pre-tested vinyl
- Soft and cozy with flocked surface
- Modern houndstooth fabric design
- Color box with repair patch

COLORS



Inflated Size	Coil Beam	Case Pack	Item Number
108cmx80cmx66cm (42.5" x31.5" x26")	Color box	0.053cbm/6pcs	27493

# Deluxe Armchair

- Heavy duty & pre-tested vinyl
- Soft and cozy with flocked surface
- Modern houndstooth fabric design
- Color box with repair patch

COLORS



Inflated Size	Coil Beam	Case Pack	Item Number
108cmx88cmx70cm (42.5" x34.5" x27.5")	Color box	0.038cbm/4pcs	27485





# Lazy Sofa

- Heavy duty & pre-tested vinyl
- Soft and cozy with flocked surface
- Deluxe indoor design
- Color box with repair patch



Inflated Size	Coil Beam	Case Pack	Item Number
105cmx105cmx65cm (41" x41" x25.5")	Color box	0.043cbm/6pcs	27499

# Deluxe Armchair

- Heavy duty & pre-tested vinyl
- Soft and cozy with flocked surface
- Deluxe indoor design
- Color box with repair patch



Inflated Size	Coil Beam	Case Pack	Item Number
85cmx82cmx60cm (33" x32" x23.5")	Color box	0.038cbm/6pcs	27498

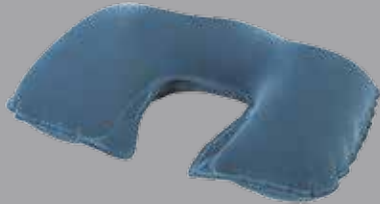






I-BEAM INFLATABLE PILLOW

- # 137002
- 53cmx37cm(21"x14.5")
  - 8 ga. (0.20mm) vinyl
  - 16ga.(0.40mm) flocked vinyl top
  - Color Box
  - 0.033cbm/48pcs/ctn



TRAVEL AIR PILLOW

- # 137007
- 45cmx28cm(18"x11")
  - 8 ga. (0.20mm) vinyl
  - 16ga. (0.40mm) flocked
  - Color Box
  - 0.048cbm/72pcs/ctn



INFLATION HANDPUMP

- Easy to Inflate and Deflate
- 2 Nozzles to fit major standard valves

- # 29P386
- Size: 8.7cmx30cm(3.4"x11.8")
  - Air volume: 700cc x 2
  - Color box, 0.046cbm/12pcs/ctn
- # 29P390
- Size: 9.7cmx36cm(3.8"x14")
  - Air volume: 1200cc x 2
  - Color box, 0.053cbm/8pcs/ctn



DOUBLE ACTION HAND PUMP

- Easy to Inflate and Deflate
- 3 Nozzles to fit major standard valves

- # 29P387
- Size: 38cm(14.95")
  - Air Volume: 1500cc x 2
  - Color box, 0.069cbm/6pcs/ctn
- # 29P388
- Size: 45cm(17.7")
  - Air Volume: 2000cc x 2
  - Color box, 0.052cbm/4pcs/ctn



FOOT PUMP

- Just press by feet to Inflate or deflate
- 2 Nozzles to fit major standard valves
- Polybag with header card

- # 29P202-1
- Size:11cm(4.5")
  - Air Volume: 500cc
  - 0.075cbm / 48pcs / ctn



BELLOWS FOOT PUMP

- Just press by foot to inflate or deflate
- 3 Nozzles to fit major standard valves
- Shrink wrapped w/insert card

- # 29P389
- Size: 19x16cm (7.5"x 6.3")
  - Air volume: 2000cc
  - 0.038cbm/12pcs/ctn
- # 29P391
- Size: 26.5x18.3cm (10"x 7.3")
  - Air volume: 3000cc
  - 0.048cdm/12pcs/ctn



DC ELECTRIC AIR PUMP

- Simply to be charged by car lighter
- Quickly deflate and infate
- 3 nozzeles to fit major standard valves
- Pressure:3500pa-4500pa

- # 29P309
- DC 12V
  - Color box: 0.022cbm/12pcs/ctn



AC ELECTRIC AIR PUMP

- Include 3 nozzles to fit all recreational inflatable
- Max. Air Pressure: 1.3PSI(9kPa)
- Power: 300W(EU) 250W(US)
- EMC/LVD/ETL/CE Approved

- # 29P442EU
- AC 220-240V(Euro Standard)
  - Conform to ROHS Directive



- # 29P442US
- AC 110-120V(U.S.A & Canada Standard)



AC ELECTRIC AIR PUMP

- Multi-plug available
- 3 Nozzles to fit major standard valves
- Pressure:4000pa
- Color box,0.022cbm/12pcs/ctn

- # 29P308EU
- AC220-240V(Euro Standard)
- Conform to RoHS Directive
- # 29P308GB
- AC220-240V(UK Standard)
- Conform to RoHS Directive
- # 29P308US
- AC120V(U.S.A&Canda Standard)



AC ELECTRIC AIR PUMP

- AC ELECTRIC AIR PUMP
- Convenient for Indoor and Outdoor use
- Powered by AC socket or Car Light
- Quickly inflate and deflate
- Pressure: 2500 Pa
- 3 nozzels to fit major standard valves
- Color box: 0.024cbm/12pcs/ctn

- # 29P364EU
- AC220-240V or DC 12V



# 29P312-2EU

- DC 12V(Battery + Cigar Lighter) + AC 230V(Euro.Standard)



# 29P312

- DC 12V(Battery)



3-WAY ELECTRIC AIR PUMP

- Convenient for Indoor and Outdoor use
- Powered by AC Socket or Car Lighter
- Or direct use by 8 X AA-cell Batteries
- Quickly deflate and inflate
- 3 nozzles to fit major standard valves
- Pressure: 2400Pa
- Color Box:0.052cbm/24pcs/ctn





Distribuito da:

**FreeBie**

[www.freebie.it](http://www.freebie.it)

[info@freebie.it](mailto:info@freebie.it)